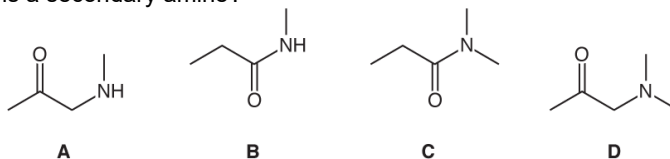


Amines (MCQ)

1. Which molecule is a secondary amine?



Your answer

[1]

2. $\text{CH}_3\text{CH}_2\text{Cl}$ reacts with an excess of ethanolic NH_3 .

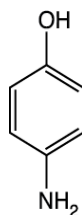
Which compound is the main organic product?

- A** $\text{CH}_3\text{CH}_2\text{NH}_2$
B $(\text{CH}_3\text{CH}_2)_2\text{NH}$
C $(\text{CH}_3\text{CH}_2)_3\text{N}$
D $(\text{CH}_3\text{CH}_2)_4\text{N}^+$

Your answer

[1]

3. The compound shown below can be prepared from phenol.



Which reagent(s) is/are required?

- A** Concentrated NH_3
B Dilute NH_3
C Dilute HNO_3 and then concentrated HCl/Sn
D Dilute HNO_3 and then NaBH_4

Your answer

[1]

Mark scheme – Amines (MCQ)

Question			Answer/Indicative content	Marks	Guidance
1			A	1	Examiner Comments This question was answered correctly by over 80% of the candidates. The main distractor appeared to be B which was an amide rather than an amine.
			Total	1	
2			A	1	
			Total	1	
3			C	1	
			Total	1	